

February 09-21, 2012

FUJI

## Beqa Lagoon Resort

The marine life – this is a whole world of its own. Here you can see whales and turtles, dolphins, and clown fish. Untouched...unspoiled... The way nature was intended to be seen.....by you.



**Package includes:** Roundtrip(R/T) airfare Los Angeles/Nadi on Air Pacific, R/T ground transfers, R/T boat transfers, 10 nights deluxe accommodations, 3 gourmet meals per day, 8 days of two-tank boat dives, 2 afternoon boat dives, unlimited shore diving, use of tanks, weights, video of your holiday above and below the water!

**Package does not include:** Airfare to Los Angeles, beverages and bar tab, day room in Nadi on our last day (approx \$65US), airline fuel surcharges/taxes-currently \$314USpp and is subject to change until ticketed, gratuities, and insurance.

**Cost:** Diver -----\$3419US  
Non-diver - \$3219US



**Tropical Adventures Travel**

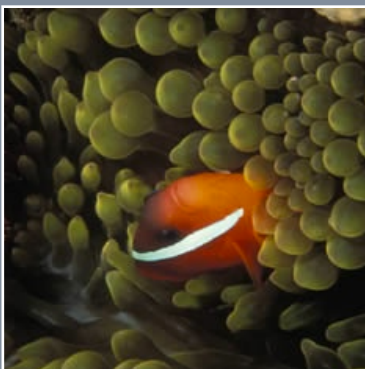
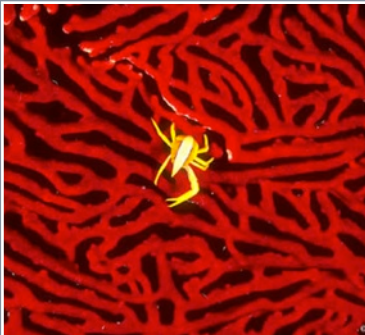
Tel: (780) 499-0969

Fax: (780) 702-6746

[www.tropicaladventurestravel.ca](http://www.tropicaladventurestravel.ca)

[tropicaladventurestravel@tbwifi.ca](mailto:tropicaladventurestravel@tbwifi.ca)

# EXPLORE



## A Little about Fiji:

Fiji comprises an archipelago of more than 333 islands, of which 110 are permanently inhabited, and more than 500 islets, amounting to a total land area of 18,300 km<sup>2</sup>. The two major islands, Viti Levu and Vanua Levu, account for 87% of the population of almost 850,000. The former contains Suva, the capital and biggest city. The two most important islands are Viti Levu and Vanua Levu. The islands are mountainous, with peaks up to 1,300 metres (4,250 ft), and covered with thick tropical forests. Other important towns include Nadi (the location of the international airport), and Lautoka, Fiji's second city with large sugar cane mills and a seaport.

### Climate

The climate in Fiji is tropical marine and warm most of the year round with minimal extremes. The warm season is from November till April and the cooler season May to October. Temperature in the cool season still averages 22 °C.

Fiji is a land where there is still room to move. Set in the tropical South Pacific, Fiji is surely the essence of a tropical island paradise.

White sandy beaches, swaying coconut trees, pristine oceans and waterways and a range of things to do and see that will appeal to the most discerning traveler.

Revel in paradise, stroll on glimmering white beaches hand-in-hand at sunset, snorkel, dive, surf or kayak the pristine oceans. Whitewater raft the clear and clean waterways, cruise the ocean around the mainland and outer islands, trek the rain forests, backpack the outer islands, visit welcoming villages and experience sustainable living or immerse yourself in their unique culture and history.



# COME EXPLORE, SHARE, AND DISCOVER....

Fiji has 'Diving' experiences extraordinaire. Shore dive, night dive, resort dive, wreck dive or cave dive. Fiji is renowned as "The Soft Coral Capital of the World" and is also home to the "Great Astrolabe Reef". Feel the goose-bumps as you experience shark feeding or dive the light fantastic and swim with the giant mantas. The moderate water temperature makes for year-round diving and the visibility is a photographers dream. With over 4000 square miles of coral reef, Fiji offers divers unparalleled marine biodiversity.



## Deposit Requirements:

\$1000US required upon booking. Balance due November 15, 2011.

## Cancellation Policy:

No refunds will be issued. Be sure to have cancellation insurance.

